

CURRENT PROGRESS

- National Water Model (WRF-Hydro) set up for Alaskan basins (Figure 1)

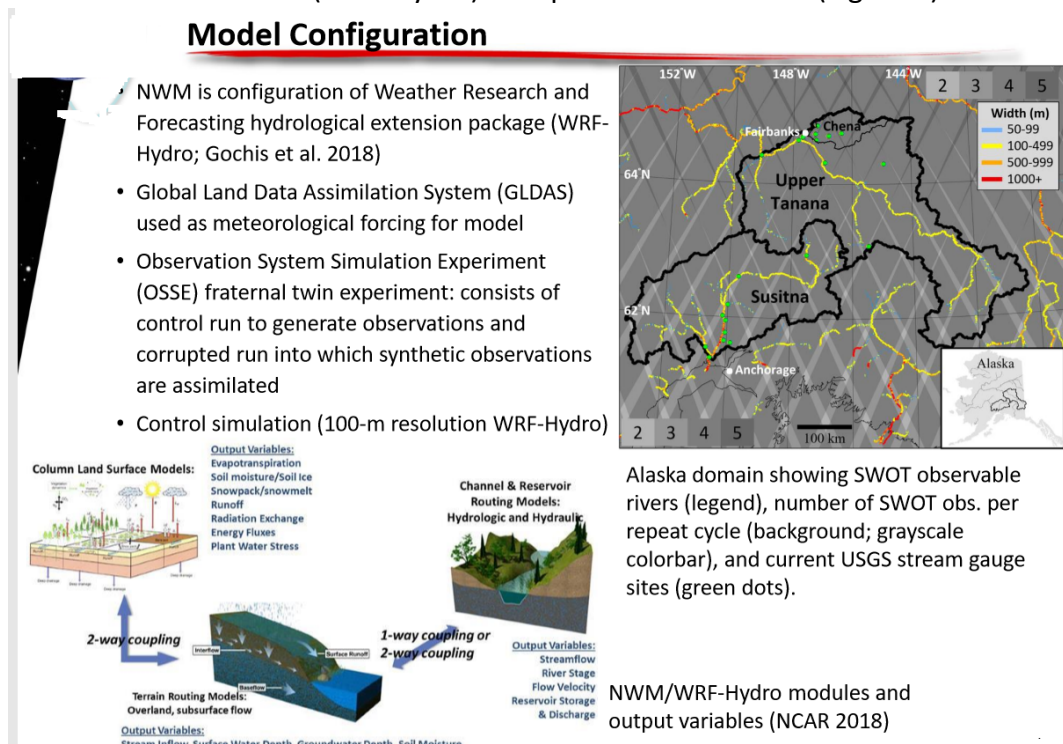


Figure 1. National Water Model/WRF-Hydro set up over Alaska basins for SWOT data assimilation

- CNES SWOT Simulator has been applied by the EA to generate SWOT like river observations for assimilation in WRF-Hydro
- EA has added to the CNES Simulator functionality by contributing a python script for GIS shape file generation.
- EA has also helped fellow EA to overcome challenges in using the CNES simulator (e.g. IIT-Bombay).
- Currently, EA is writing up a paper on the SWOT data assimilation as part of the EA project.

NEXT STEPS:

- Attend SWOT Hackathon-2020 at University of Washington in person to showcase results
- Help fellow EAs as a ‘hacker’ at the Hackathon to solve hurdles/bottlenecks in the use of the simulator or complete the integration of SWOT data in EA models/tools.