

## PAKISTAN COUNCIL OF RESEARCH FOR WATER RESOURCES (PCRWR)

### CURRENT PROGRESS

- Wetlands (sudden water bodies) in Southern Pakistan suffering from water logging identified (Figure 1)

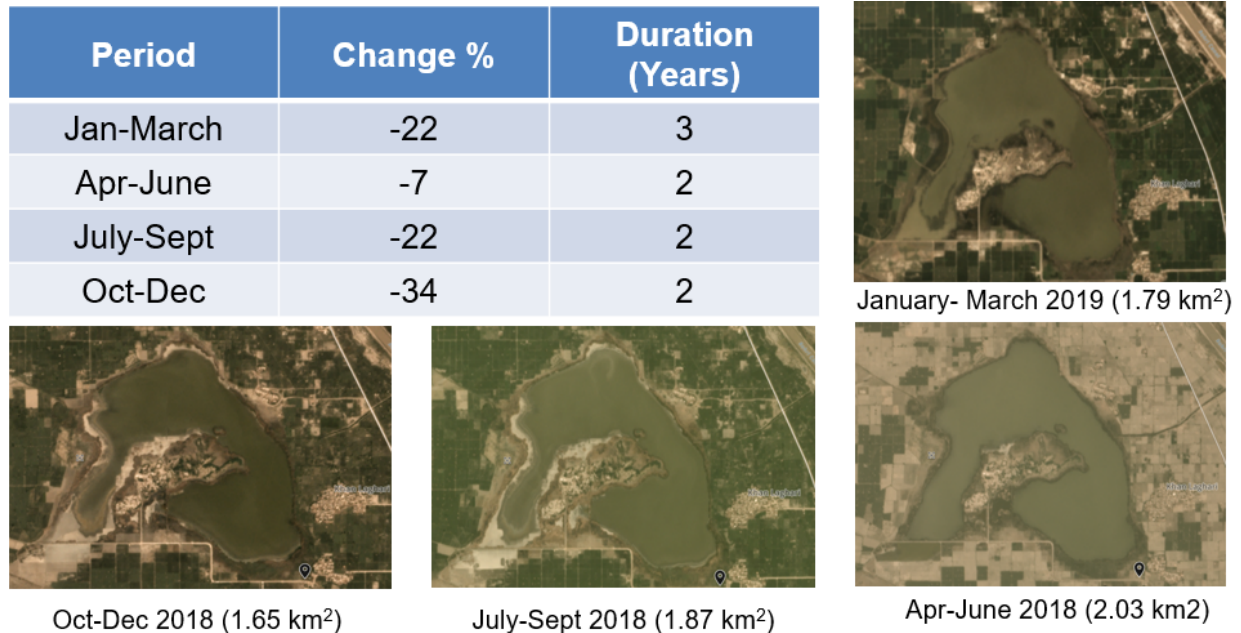


Figure 1. Example wetland that has appeared suddenly in Southern Pakistan due to water logging issues.

- Virtual stations for Jhelum river basin already identified and VIC model set up (from a previous engagement with University of Washington)
- Detailed guidance has been provided by SAWG leads on how to prepare input files for SWOT CNES simulator to generate SWOT like observations of lake inundation area for the wetlands.
- PCRWR is following up on the guidance and currently exploring the CNES simulator

### NEXT STEPS:

- PCRWR is expected to attend the SWOT Hackathon-2020 at University of Washington either in person or remotely.
- Further issues in using the simulator (addressing the code issues) and the chain of integration of SWOT data in wetland analysis and Jhelum river basin (VIC model) will be explored.